

# **AUTOMATED CODE COMPLIANCE CHECKING THROUGH BUILDING INFORMATION MODELING**



**FINAL YEAR PROJECT UG 2015**

By

<b>SHAHZEB KHAN</b>	<b>132485 (Group leader)</b>
<b>SAAD ADEEL</b>	<b>123497</b>
<b>SAMI ULLAH KHAN</b>	<b>124440</b>
<b>DANIAL KHAN</b>	<b>124327</b>

(2015-NUST-BE-CIVIL)

**NUST Institute of Civil Engineering (NICE)**

**School of Civil and Environmental Engineering (SCEE)**

**National University of Sciences and Technology, Islamabad, Pakistan.**

This is to certify that the  
Report entitled  
**AUTOMATED CODE COMPLIANCE CHECKING THROUGH  
BUILDING INFORMATION MODELING**

Submitted by

<b>SHAHZEB KHAN</b>	<b>132485 (Group leader)</b>
<b>SAAD ADEEL</b>	<b>123497</b>
<b>SAMI ULLAH KHAN</b>	<b>124327</b>
<b>DANIAL KHAN</b>	<b>124440</b>

Has been accepted towards the requirements

For the undergraduate degree

**Bachelors of Engineering in Civil Engineering**

---

**Dr. -Ing. Abdur Rehman Nasir,**  
**Assistant Professor,**  
**NUST Institute of Civil Engineering (NICE),**  
**School of Civil and Environmental Engineering (SCEE),**  
**National University of Sciences and Technology, Islamabad, Pakistan.**

## **ACKNOWLEDGEMENTS**

In the name of Allah Almighty, who is the most beneficent and the most merciful. Without the help of Allah we could not have made this progress and completed our project. Our group is thankful to all the teachers that helped us in times of need especially Dr.-Ing. Abdur Rehman Nasir for his constant support and guidance and Dr. Jamal-ud-din Thaheem for his constant motivation and encouragement. We are thankful to Dr. Abdul Waheed for providing us with knowledge of the industry that enabled us to carve a part for our project. We are thankful to Capital Development Authority for they confide their trust in us and facilitated us in any matter regarded. We are also thankful to our friend Hijab Zahid from SEECS who helped us in developing our Service Delivery Management System.

## **List of Abbreviations**

2D	Two Dimensional
3D	Three Dimensional
AEC	Architecture, Engineering and Construction
API	Application Programming Interface
ASCE	American Society of Civil Engineers
ACI	American Concrete Institute
BCA	Building Control Authority
BIM	Building Information Modeling
CAD	Computer Aided Design
CDA	Capital Development Authority
EDA	Express Data Manager
HVAC	Heat Ventilation and Cooling
PTC	Parametric Technology Corporation
RFID	Radio Frequency Identification
SCA	Singapore Construction Authority

# **TABLE OF CONTENTS**

1. INTRODUCTION .....	8
1.1 BACKGROUND.....	8
1.2 PROBLEM STATEMENT .....	9
1.3 OBJECTIVES .....	10
1.4 AREAS OF APPLICATION .....	10
2. LITERATURE REVIEW.....	11
2.1 BACKGROUND.....	11
2.2 BUILDING CODES .....	11
2.3 AUTOMATION OF COMPLIANCE/CODE CHECKING .....	12
2.4 STRATEGIES AND APPROACHES TO AUTOMATED CODE COMPLIANCE CHECKING .....	13
2.4.1 E-PLANCHECK SINGAPORE .....	13
2.4.2 AUSTRALIA DESIGN CHECK.....	14
2.4.3 USA INTERNATIONAL CODE COUNCIL SMARTCODES.....	14
2.5 BUILDING INFORMATION MODELING .....	15
2.5.1 APPLICATIONS OF BIM .....	18
2.5.2 TECHNICAL BENEFITS: .....	20
2.5.3 BIM MODEL CATEGORIES .....	22
2.5.4 CURRENT AND FUTURE TRENDS .....	23
2.6 AUTODESK REVIT.....	24
2.6.1 REVIT ARCHITECTURE .....	25
2.6.2 REVIT STRUCTURE .....	25
2.6.3 REVIT MEP.....	25

2.7	VISUAL PROGRAMMING.....	25
2.8	DYNAMO.....	26
2.8.1	THE ANATOMY OF DYNAMO .....	27
2.9	PROBLEMS IN EXISTING CODE COMPLIANCE PROCESS.....	29
3.	METHODOLOGY .....	31
3.1	GENERAL .....	31
3.2	AUTOMATION OF THE PROCESS .....	32
3.5	SERVICE DELIVERY MANAGEMENT SYSTEM .....	37
4.	RESULTS.....	39
4.1	BACKGROUND.....	39
4.3	CREATING CODE COMPLIANCE CHECKING PROCESS.....	39
4.4	SERVICE DELIVERY MANAGEMENT SYSTEM .....	41
5.	CONCLUSION AND RECOMMENDATION .....	42
5.1	CONCLUSION .....	42
5.2	RECOMMENDATIONS .....	42
5.1.1	BYE-LAWS.....	42
5.1.2	TYPE OF CONSTRUCTION.....	42
5.1.3	DESIGN INTENT .....	43
	REFERENCES .....	44

## **LIST OF FIGURES**

Figure 1 – Automated Code Compliance Checking Framework (Nguyen & Kim, 2011) .....	13
Figure 2 – BIM Framework for SMARTcodes (C. Eastman et al., 2009).....	15
Figure 3 - Stages of Building Process (Ustinovičius et al., 2018).....	16
Figure 4 - Building process using the BIM method (Ustinovičius et al., 2018).....	17
Figure 5 - Uses of BIM (Jung & Joo, 2011) .....	18
Figure 6 - Program Flow in Dynamo .....	27
Figure 7 - Anatomy of the Nodes .....	28
Figure 8 – Problems from Literature Review .....	29
Figure 9 – Problems from Survey of CDA.....	30
Figure 10 - Project Methodology and Workflow.....	31
Figure 11 - Manual code compliance checking process .....	32
Figure 12 - Workflow of Creating code through Visual programming .....	33
Figure 13 - Extracting Data from BIM Model.....	34
Figure 14 - Organizing and Filtering Data from BIM model .....	34
Figure 15 - Result after Calculations .....	35
Figure 16 - Final Result in Spreadsheet program .....	35
Figure 17 - Review and Final Report.....	36
Figure 18 - Workflow of Service Delivery Management System .....	37
Figure 19 - BIM model of Residential Building.....	39
Figure 20 - Codes developed through Visual programming.....	40
Figure 21 - Report of Complete BYE-LAWS .....	40
Figure 22 - User Portal in Service delivery management system.....	41
Figure 23 - CDA portal of Service Delivery Management System .....	41

## **1. INTRODUCTION**

### **1.1 BACKGROUND**

Compliance checking is the verification of plans or a built structure with the set of rules defined by a local authority, before or after the construction respectively. Construction drawings and plans are currently checked manually in Pakistan against a set of changing and complex set of rules. This can be quite a hectic task for both the Client and the Engineer, and in most cases, leads to anomalies, inconsistencies and delays in the entire construction process. (Malsane 2010). The traditional practice of code compliance checking has been largely a manual process, in the construction industry, which makes it cumbersome, expensive and prone to errors. (Dimyadi, J. and R. Amor 2013). Verifying the functionality of plans or a built structure is a very complex task. In situations like Building inspector's role under the BCA (Building Control Authority), Code Compliance is an important factor that needs to be carried out smoothly and accurately. However, some obstacles may arise in recent practices of manual process; some of them involve interpreting complex technical documents.

The Code Compliance process requires profound information of the strategies, perception of changes and great knowledge of the construction process as an Automatic rule checking has been perceived a hypothetically giving remarkable incentive to the AEC business from both administrative and industry points of view. Some key challenges to an effective standard check execution are simply the complexities characteristic of the guidelines and the wide conditions they should apply to. Due to a considerable number of building standards and a hypothetically endless number of principles that can be characterized, it is essential that the principles be systematized to make the guideline project sensible. (Solihin & Eastman, 2015).

It is an extensive process that involves the user having to visit the Building Control Authority office multiple times for Reviewing, correction and approvals of a building plan. To achieve these efficiencies, designers need to change their working practices and move away from building



definitions in multiple and disparate documents to a single coherent building model that generates documentation. (Malsane 2010)

It is claimed that automated compliance checking would not only prove beneficial to designers but to also building certifiers, consultants, building code authorities, specification writers and builders (Tan et al., 2010)

## **1.2 PROBLEM STATEMENT**

Even though the concept of BIM is being understood by the licensed/prominent architectural and design firms in Pakistan, it has not been widely accepted for use as a design approach. Architectural and design firms wanting to use BIM design approach and Clients wanting to gain from additional information, accuracy and integration need to come to a compromise and agree to develop the BIM in different stages and with different information levels

Practically in the AEC industry in Pakistan, the uses of modern tools are not encouraged on certain levels. Many of the people involved with the industries are rather incapable of using it because of their thinking that they are comfortable using the traditional methods and they are not compliant with new generation progressive devices. This causes lack of coordination between different project stakeholders eventually leading to project failure in cost and time constraints. This results in the poor performance of the project deliverables and in due course the collective productive outcome of the AEC industry slack. (Abdullah, 2013)

Manual work and human interpretation lead to inconsistencies in the application of compliance with building regulations (Solihin & Eastman, 2015). Therefore, there is a need for the compliance checking process automation.

The process is already automated in most of the emerging countries, so if it is not done now, Pakistan will lag behind in this race of advancement in construction practices.

### **1.3 OBJECTIVES**

- To identify the problems present in the existing code compliance (Bye-laws) processes
- To develop a framework for Automated Code Compliance checking through BIM based visual programming.
- Integrate the framework to a web-based data management system for efficient service delivery management of automated code compliance checking.

### **1.4 AREAS OF APPLICATION**

This research can be applied to all civil engineering works, however in this project our main focus will be on residential buildings. The methodology followed to verify the code compliance for any civil engineering project. The framework that will be developed can be used throughout the life cycle of the project for compliance checking. Its ability to address all these applications through 3-D visualization will enable it to be incorporated in the construction industry of Pakistan for sustainable development and building operations and management.

## **2. LITERATURE REVIEW**

### **2.1 BACKGROUND**

Whenever a construction project is about to start some problems arise. The most important issue when planning and constructing a project is to maintain the safety and quality of project planning at a high level and according to the standards. Therefore, this quality must be constantly reviewed in terms of compliance and accuracy with the codes and guideline applicable throughout the project. Today, this verification process is difficult, bulky, laborious and error prone because it is basically done manually, based on a two-dimensional drawings and repeatable layout, with each layout change done by the administrator's planning engineer.

Recently, many automation methods have proven this process extremely relevant by using numerical methods, such as by using building information modeling, to change the way it is done, reducing the amount of work and simultaneously improve the design quality. (Hardin & McCool, 2015)

### **2.2 BUILDING CODES**

We live in an environment made by human, designed per some rules and regulations for our safety and well-being. A few regulatory compliance assessments are done for a building throughout its entire useful life. It is thus the duty of the designer to design the building in such a way that every aspect of it is in accordance with the various standards and regulatory requirements. The design is then formally audited by the local building council for approval. The process of auditing continues during construction and installation of various structural and MEP components etc. both before and after installation to check for the quality of product and workmanship confirmation to the required standard. Regular audits are also done after the construction to ensure that the usage of building and maintenance is as per designed and planned. Even at the stage of demolition, conformance to standards is necessary to ensure the safety of all nearby citizens.(Dimyadi & Amor, 2013)

In short Building codes also called building regulations or building control is a set of rules for construction of building and non-building structures based on some previously defined set of standards. Building codes are of many types such as, for energy systems & for residential buildings. Conformance to the building codes is necessary to obtain planning permission from local council.

### **2.3 AUTOMATION OF COMPLIANCE/CODE CHECKING**

The traditional practice of building code compliance checking is a manual process consisting of examining the 2D drawings against every rule one by one which is laborious, costly, and subjected to errors. Various attempts have been done to automate the process for the past several decades but the process is slow. Several reasons for failure to adapt to the automated process is the diverse nature of the construction industry, complex network of stakeholders, high competitiveness, decreasing productivity and less or no motivation to adapt to the new technology from traditional manual methods.(Dimyadi & Amor, 2013)

Automated Code Compliance Checking is a particular case of Building Model Checking, that approves Building Information Models and structure basics by observing and comparing the parameters of the data from BIM model against standard codes and plans but it depends on the consolidated utilization of strategies gotten from standardizing requirements at zone, national, and universal dimension customers' requirements and best understanding initiating from self-involvement with a three-dimensional(3D) and object based design. (Ciribini, Ventura, & Paneroni, 2016).

With regards to construction regulation consistence checking of a structure configuration venture, inputs are the regular structure parts investigated and assessed by a procedure, Yields are the status of code consistence derived approximately because of the changes/checking of the contributions by the procedure. Controls are the principles, criteria, rules, and so forth., that direct the evaluation procedure (for example construction regulations/guidelines) Systems of the code checking apparatuses/strategies or procedures, for example calculations to reason complex structure data and capacities to check for code consistence, which achieve the activities depicted inside the procedure (Nguyen & Kim, 2011).

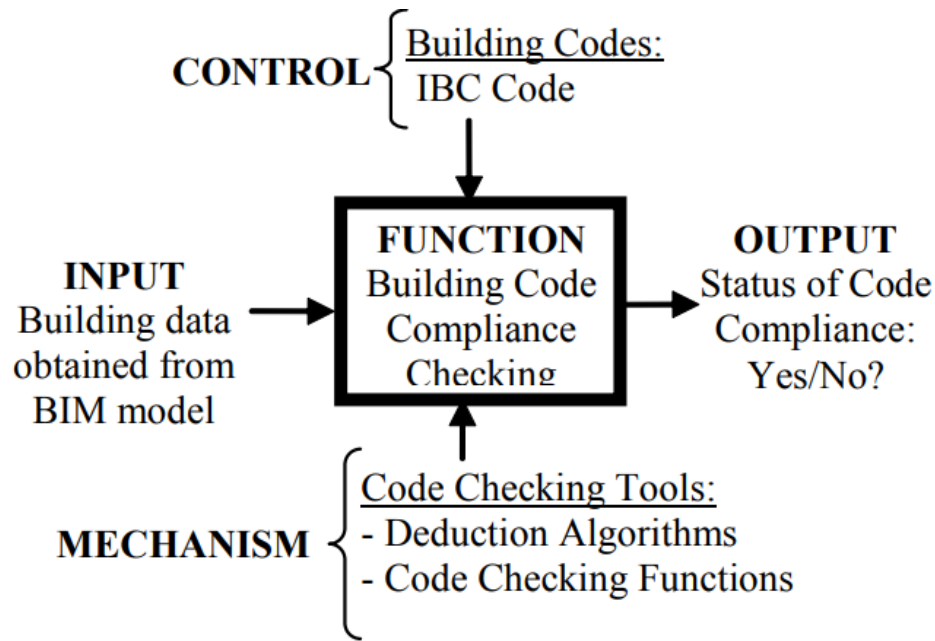


Figure 1 – Automated Code Compliance Checking Framework (Nguyen & Kim, 2011)

## 2.4 STRATEGIES AND APPROACHES TO AUTOMATED CODE COMPLIANCE CHECKING

Some of the famous approaches towards automated compliance checking are given below.

### 2.4.1 E-PLAN CHECK SINGAPORE

The E-Plan Check scheme was a determination to check construction commandments naturally through Industry foundation classes (IFC) and Computer Aided designing. The software was made by CORENET in the year 2000 in the Singapore Construction Authority. The framework flopped at first because of the exclusive idea of the application and its failure to deal with awful information or bad data. It was gone for Building and Architecture components checking. The arrangement point of the scheme was to decrease the problem of consistence to strategies. This exertion united proficient information of guidelines, artificial aptitude and BIM Technology. (Khemlani, 2015).

The complexity of the instructions in Singapore led to the execution of an automatic rule within a mechanized framework by as much as 30% of the overall time. The intricacy of Building rules and Regulations and varieties of understanding are average highlights of automation strategies. An

examination by FIATECH affirmed Building Inspectors from shifting nearby specialists gave distinctive elucidation of structure guidelines. The CORENET framework experienced a few cycles because of human contact and interruptions (Solihin & Eastman, 2015). A permitted stage; FORNAX, was created to extricate fundamental BIM data from IFC information and connections to directive data (Khemlani, 2015).(Reinhardt & Mathews, 2017)

#### **2.4.2 AUSTRALIA DESIGN CHECK**

Australia Design check is an automated building code compliance checking system for the Construction Code of Australia (Ding et al., 2006). The system pays a shared object concerned with Express Data Manager and database management Platform (Drogemuller et al., 2004). The EDM comprises of model plans, rule sets and enquiring plans (Lee et al., 2016). The standard sets characterize the guidelines to approve building information models by utilizing the Express language. The underlying achievability scheme "Structure for access and flexibility" building guideline was encoded. Article based elucidation was tried for detail and utilized depictions, necessities of execution, items, properties and connections to space explicit information. The object based information was coded into the Express Data Manager (EDM) rule sets (Lee et al., 2016).

#### **2.4.3 USA SMARTCODES INTERNATIONAL CODE COUNCIL**

The International Code Council's SMARTcodes scheme performed code checking with Model Checking Software (See & Conover 2008). The framework for automated consistency checks of guidelines for government and local codes was created. (Wix, Nisbet, & Liebich, 2008). Engineers and creators were able to present their Building Information Modeling as a major aspect of an application arrangement. This framework's chain of importance associated table data in a cell set, such as MS Excel (Choi & Kim, 2015). The framework has XML-dependent textual programming for addressing smart code directions and actions (Wix et al., 2008). The BIM models are observed/assessed by means of Solibri Model Viewer through an IFC format.

Building Construction codes are made from SMART codes developer in a systematic and formal way that encourages semi-automatic production of terminal codes. Presently the SMART codes display checking framework centers around accessible or effectively determined properties as

opposed to inferring helper demonstrate perceives or logical models for complex recreation for different sort of investigations. (C. Eastman, Lee, Jeong, & Lee, 2009)

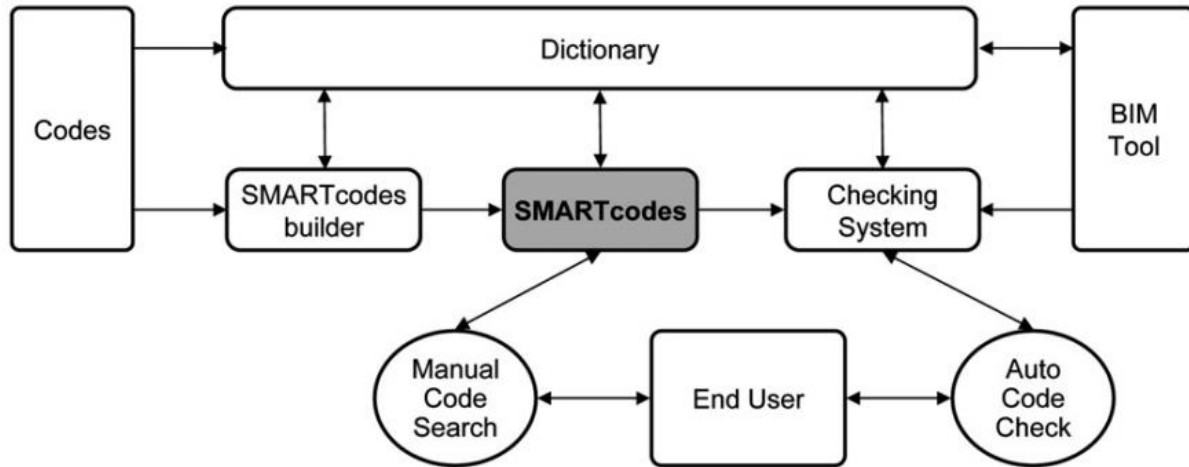


Figure 2 – BIM Framework for SMARTcodes (C. Eastman et al., 2009)

## 2.5 BUILDING INFORMATION MODELING

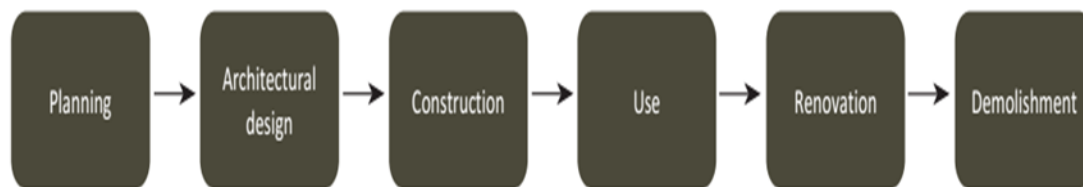
*“Building Information Modeling (BIM) is one of the most promising developments in the architecture, engineering, and construction (AEC) industries. With BIM technology, one or more accurate virtual models of a building are constructed digitally. They support design through its phases, allowing better analysis and control than manual processes. When completed, these computer-generated models contain precise geometry and data needed to support the construction, fabrication, and procurement activities through which the building is realized. BIM also accommodates many of the functions needed to model the lifecycle of a building, providing the basis for new design and construction capabilities and changes in the roles and relationships among a project team. When adopted well, BIM facilitates more integrated design and construction process that results in better quality buildings at lower cost and reduced project duration”.*(C. M. Eastman, 2011)

In a virtual digital environment, BIM simulates the construction process. BIM digitally / virtually constructs a 3D virtual / digital representation of the original building, which is called the BIM model. After completion, the Building Information Model has the accurate geometry and all the relevant data required for calculation, visualization and other processes in various construction

phases such as design, procurement and manufacturing to realize the construction. It is important to note that BIM is not a specific software, making BIM models is a name of the process.

The Building Information Modeling (BIM) has recently become a current research territory in Architecture, Engineering and Construction (AEC) industry because of its emphasis on improving structure with computerized innovation, BIM stores building structure as a gathering of items with related properties (for example a divider that has a length, stature and material) and these models contain the three-dimensional geometry of the working just as the semantic data of the components and Innovative advances in BIM can help the procedure of computerizing the checking of construction regulations conformances since all the required information is available inside the BIM demonstrate (Ciribini et al., 2016).

A building data show illustrates the geometry, spatial connections, geographical data, quantities and properties of structural components, cost gages, inventories of materials and the construction sector's undertaking plan, which includes the BIM alternative construction process (Building Information Modeling), is growing rapidly all over the world as the linear projection and the building management structure could be considered as a model of a traditional construction process. (Raninder Kaur Dhillon, Hardeep Singh Rai, 2017). In this model, it is conceivable to separate the projection, planning, implementation and operation stages:



*Figure 3 - Stages of Building Process (Ustinovičius et al., 2018)*



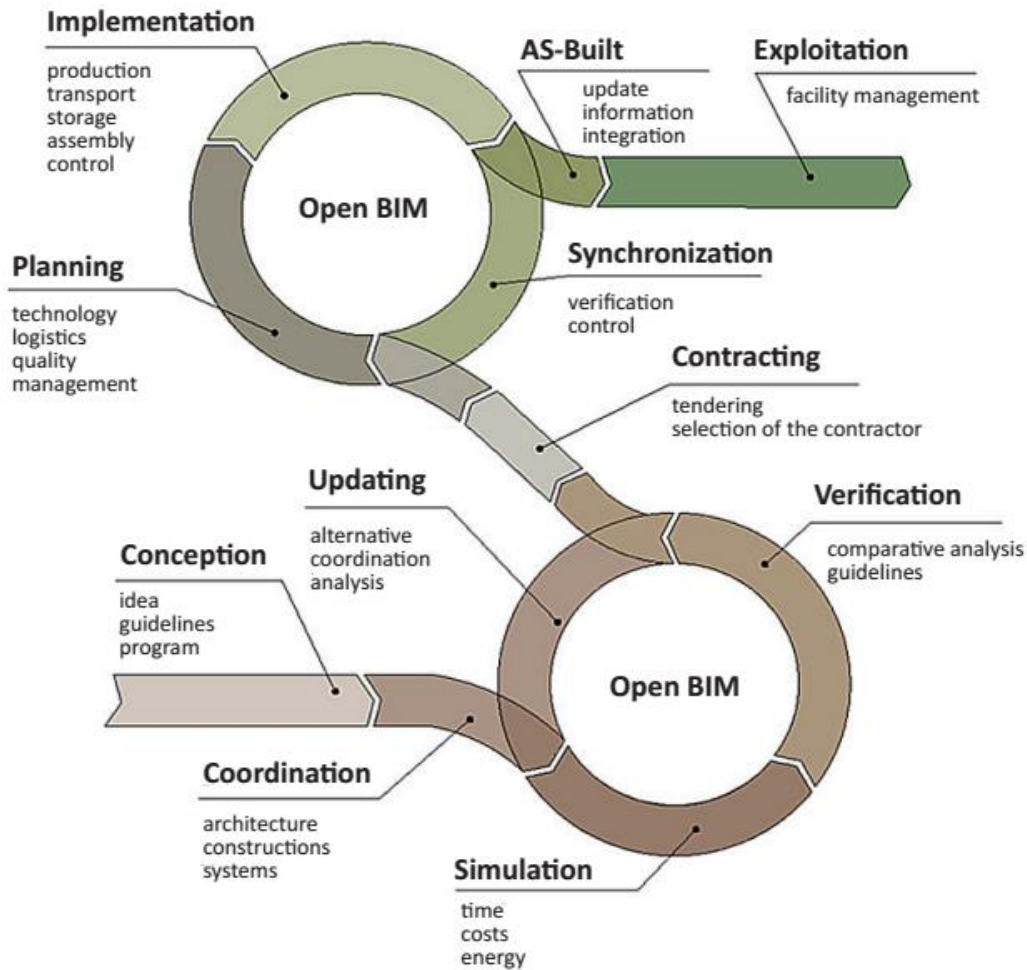
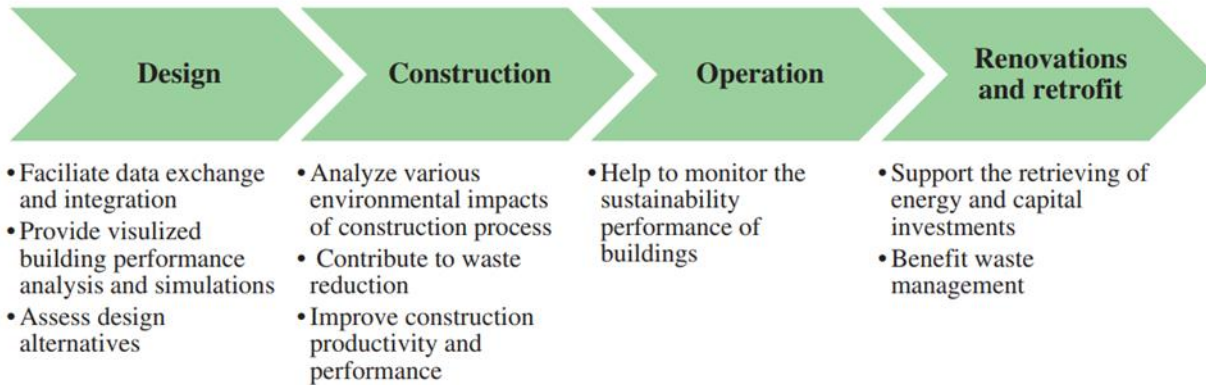


Figure 4 - Building process using the BIM method (Ustinovičius et al., 2018)

The construction process based on the BIM method is an irresistible cycle in which the locations of the construction process and the flow of evidence are prepared for a system of organizational activity at the same time (Leonas et al., 2018). It was determined that the use of BIM has obvious advantages, although it may be quite unaffordable for some users.



*Figure 5 - Uses of BIM (Jung & Joo, 2011)*

### 2.5.1 APPLICATIONS OF BIM

A BIM model can be utilized for the several purposes as envisaged by the study (Azhar, 2011a)

#### • Visualization

3 Dimensional renderings can be produced effectively and visualized easily.

#### • Shop Drawings and Fabrications

Shop drawings / models for different structure frameworks are very difficult to produce. For example, after the model is made, the metal sheet ventilation shop drawings can be delivered in no time.

#### • Code audits

It can be used for audits of different structural components. Fire divisions and other building regulatory authorities may utilize these models for audit of structures.

#### • Cost assessing

BIM is helpful in assessing costs of project. Material quantity is extracted and updated when any changes are made in the model for calculating cost.

#### • Sequencing of Construction

For all building components, a BIM design model can be used effectively to organize material requesting, making and delivering plans.

- **Conflict and Impact discovery**

Since BIM data models are made to scale in 3-Dimensional space, every single real framework can be updated in a split second and consequently checked for clashes.

For instance, it can check that MEP pipes does not cross with steel bars, conduits, electrical components and dividers.

- **Forensic examination**

A BIM data model can be effectively adjusted to graphically clear potential disappointments, spills, clearing plans, etc.

- **Facilities the board**

Facilities the board divisions can utilize it for remodels, space arranging, what's more, upkeep activities.

- **Faster and increasingly compelling procedures**

The Information regarding every aspect of model is more effectively shared and can be updated and reused.

- **Better structure**

Building recommendations can be dissected thoroughly, reenactments can be performed efficiently and quickly, and execution can be benchmarked, empowering better and inventive arrangements.

- **All life costs and natural information controlled**

Ecological execution is progressively unsurprising, as well as better control of the cost of the lifecycle.

- **Better creation quality**

The quality of design and documentation is better and integrated.

- **Automated get together**

In various procedures, digital item information can be reused and used to assemble auxiliary frameworks.

- **Better client administration**

Proposals are better checked and managed by exact perception.

- **Lifecycle information**

All the information about structural, electrical, MEP components and other components is available with the model to be used throughout the usage and maintenance of Building.

## **2.5.2 TECHNICAL BENEFITS**

BIM offers a substantial specific development on customary CAD, which offers more control, more interoperability dimensions and knowledge. Computerized interpretation of both practical and physical qualities of an office empowers clients to share design structure information among software applications, both within the association / department and in a multidisciplinary environment more generally. Since data is stored in a BIM database, any changes in information required during the planning process can be consistently included and monitored throughout the project's life cycle. BIM was described as "the innovation in the production and management of a building's parametric model". It has additionally been referred as a developing multifaceted phenomenon with an object-oriented 3-Dimensional model of a building structure to authorize data exchange and interoperability (Ghaffarianhoseini et al., 2017) It has also been referred to as a multi-faceted development phenomenon with a 3-D object-oriented model of a building structure to allow data exchange and interoperability (Ghaffarianhoseini et al., 2017)

- **Data organization benefits**

BIM tools have empowered wide-ranging data related to the construction to be taken during the project, extending from specific construction components and spatial associations and connection between those items. BIM integrates construction data ranging from geometry, 3-D links, light examination, topographical information, material quantities and various properties of the material of the product building components, description, fire rating, furniture, textures, costs and total carbon content. These structures allow designers, engineers and contractors to monitor connections and associations between building components and structural component maintenance details. While the designer / engineer understands the benefits of BIM, they could become apparent to other project shareholders such as owners, contractors, subcontractors, suppliers, fit-outs, assembly companies, etc. Furthermore, BIM can also be used indispensable for competence

administration incorporation. If there are any changes in design, BIM tools can participate, assemble and keep track of all changes for the capability / project with the design principles and all design layers. BIM tools offer interoperability chances in addition to the capability for appropriate integration, permitting inputs from various authorities and different BIM based software to come together to exchange information in the model.

- **Calibration benefits**

Standards for data exchange have been developed to fully allow BIM users to exchange ideas, as sociations, information and models. These standards were created in the form of IFC which develops standards for data exchange for structure items was led by building SMART. It was a major step forward in the development of the BIM process. This was subsidized to allow and arrange interoperability between users of AEC BIM using different platforms by establishing standard design models that include rich semanthetic information and geometric component data.

**Assimilation benefits**

BIM has recently gained acceptance amongst key players in Architecture construction industry for using as a substitute technique of design and construction. Similarly, BIM is expected to be operated for data integration to increase AEC teaching. BIM has formed to encourage the expanding complex nature of development projects, organized to encourage plan, development and maintenance of events through a synchronized procedure. It gives a community stage to all the partners associated with a task lifecycle in their respective field. Owners, inventors, provisional workers and development heads can use BIM to embrace development extends more effectively than any time in recent memory. BIM can also be utilized as a smart manual book for securely supervision and working the structure giving total office data, for example, physical building structure, Mechanical Electrical and piping, furniture as well as equipment. The BIM model can be utilized effectively for mated manufacture machines for pre-created steel or other constructing sections. Where a construction illustration relates to time, it is possible to rebuild the development procedure. BIM can be viewed as a key towards future of Design and Construction and upgrade of practicality housing and prudent constructions.

- **Financial benefits**

In addition, BIM has been recognized as having significant financial advantages. BIM customers have outlined the benefits of using BIM. BIM's most significant effect was to limit documentation errors. This has been tracked by using BIM as a business advertising device. Additionally, less staff turnover was observed as the current advantage of using BIM. Less legally binding cases and decreased cost of development are considered long-term benefits. Keeping up intermittent business with past customers is additionally a remarkable advantage of BIM. For structure, the 3-Dimensional BIM model will give a progressively rational observation of the plan. By improved joint efforts, a constant improvement between various plans controls can be accomplished, which essentially diminish building mistakes and errors. Any changes in the 3-Dimensional model can be produced quickly to 2-Dimensional illustrations. Financial assessments can be separated from the BIM model to keep all associated with it informed of the financial ramifications as the model develop.

### **2.5.3 BIM MODEL CATEGORIES**

There are different kinds of models, and a few definitions are given in the script and by the standards bodies:

#### **Design Intent Model**

These models catch the expected plan and are utilized for task BIM execution, advanced structure mock-ups, special help, and coordination. The endorsed model is a contract description for submission to the administrator and for development. The amount, size, shape, area and outline of components are precise in this model; it contains one of a kind resource distinguishing proof numbers and integrates the Spatial Program model.

#### **Building Model**

Established from the Design Intent Model, these classically characterize a single structure framework made for the reasons for positioning, planning, organizing, manufacturing parts and executing development. Model components are precise and may integrate manufacture, assembly, itemizing, and non-geometric data.

## **Management Model**

This is a complex model that incorporates various Design as well as Construction BIMs, enrolled spatially and utilized for the reasons for interfering checking (conflict finding), awareness and further BIM investigations within construction.

## **As-Built Model**

These models catch the conditions toward the completion of development and should be dependent on the design intent model and progressively consolidate scheme data as development advances characterizes as-constructed models as "editable duplicate of the Record BIM that is continually refreshed to characterize to the current finished condition of the construction and frameworks setup.(Motamedi, Iordanova, & Forgues, 2018)

### **2.5.4 CURRENT AND FUTURE TRENDS**

- BIM clients spoke to all sections of the structure, development industry, and they worked all through the United States.
- The significant application zones of BIM were development archive improvement, calculated plan, support, and pre-project arranging administrations.
- The utilization of BIM brought down generally speaking danger dispersed with a comparative contract structure.
- At the term of the study, most organizations utilized BIM for 3-Dimensional and 4-Dimensional clash detection and conflict location.
- The utilization of BIM increased efficiency, better commitment of undertaking staff, and decreased possibilities.
- A deficiency was noted of capable structure data modelers in the development business, and research was started to develop in this area (Weng, Cheng, Kwong, Wang, & Chang, 2011).

## 2.6 AUTODESK REVIT

The only complete parametric Modeling software available today is Revit. It was originally created by U.S. based company PTC (Parametric Technology Corporation) which also created other popular software like FEM tool, Mathcad which are widely used in the engineering field. Originally it was only built for architectural purposes, i.e. for architects it was built. Most people involved in its development are either architects or they come from a background in design and construction. (Arkin & gregory, 2007)

Autodesk Revit Architecture was fabricated utilizing parametric structure demonstrating innovation, in which structures are spoken to as an incorporated database containing both graphical and non-graphical information as In impact, past graphically portraying the plan, BIM models in Autodesk Revit Architecture contains parameters that can be utilized to speak to construction regulation learning and can be consequently caught amid the structure procedure for supporting code consistence checking. (Weng et al., 2011) In Revit, each building or structure segment is related with predefined parameters which are assembled into two classes: type parameters and occurrence parameters. The sort parameters control all components of the equivalent type while the case parameters control chose or made examples of the sort and occasion parameters are additionally ordered into various gatherings, so all parameter can be put away in various arrangements such as: content, whole number, number, length, territory, volume, edge, URL, material, and some new parameters speaking to the information in construction standards can be made and put away as venture parameters which can be utilized to decide the code consistence of a structure part. (Weng et al., 2011)

Now Revit is used as a Building Information Modeling Software for engineers, architects, designers and contractors developed by the Autodesk. It allows user to develop a 3D model of a building and structure, annotate it using the 2D drafting components, and access the building information from the building's model database. It can also be used to plan and track changes during various stages of construction such as planning, designing, executing, maintenance and later demolishing. It can be used for architectural, structural and MEP designing of a building.



### **2.6.1 REVIT ARCHITECTURE**

The design made on the Revit architecture is only for architectural purposes. It is not applicable for structural analysis and other analysis which base on structural design. The architectural components are doors, windows, architectural columns, openings, stairs and floors. Energy analysis can also be done on architectural design.

### **2.6.2 REVIT STRUCTURE**

Revit structure is used to design the structural model for the building. Main components of structural model are beams/girders, columns, footings and reinforcements etc. Structural analysis can be done on structural model.

### **2.6.3 REVIT MEP**

MEP is an abbreviation of Mechanical, Electrical and Plumbing. It is a powerful tool of Autodesk Revit which is used in the designing of electrical/power, plumbing, drainage and HVAC (heat ventilation and cooling) systems for the building.

## **2.7 VISUAL PROGRAMMING**

The designer intents always to thrive for more sophisticated building geometries. The ongoing development in CAD (Computer Aided Design) helps the designer overcome the restrictions and use the knowledge of computer programming to its best to make the most sophisticated building designs a reality e.g. through the use of conditional statements and loops in parametric BIM. As the building designers have no substantial knowledge of the traditional programming or code writing so a visual programming languages and platforms had been introduced. Visual programming allows for a simplified and user-friendly way of replacing the traditional difficult code writing process with a visual metaphor of small blocks with different functionalities across a system or procedure. With visual programming computer programs can be manipulated graphically rather than textually code writing. Several surveys show that non-programmers or novice programmers better understand the visual programming instead of traditional programming. (Bergin & Yan, 2015)

Grasshopper and Dynamo are both based on visual programming language (Python) and create numerous opportunities for designers using Rhino or Revit. In this study Autodesk Revit and

Dynamo has been used having some differences from grasshopper. Some of the benefits of Dynamo are: (DynamoPrimer, 2016)

- **Customize Revit**

Dynamo lets users build automation routines for Revit without learning the Revit API (Application Programming Interface) which is difficult. This opens up many opportunities for Revit users to customize their workflow without learning a lot.

- **Control model information**

The building information modelers often say that the real power of the Revit is not just geometry creation but how the model information can be tracked and controlled and Dynamo does this job very well. It lets the user design systematic relationships for manipulating parameters and model elements that would otherwise be impossible with Revit built-in tools.

- **Design with BIM**

There is often a misconception with BIM that it is only for production, not designing. But with Dynamo this misconception is proved inaccurate. It allows the designers various iterative tools in the context of BIM.

## **2.8 DYNAMO**

Dynamo is the Autodesk Revit API (Application programming interface) that allows users to create custom tools and plugins and add them to the Revit's integrated features. A number of visual programming software that includes Maya Hypergraph, LEGO MINDSTORMS NXT, which is based on National Instruments LabVIEW, influences the user interface and feel of dynamo. As a parametric modeling program, it takes inspiration from McNeel's Grass-hopper for Rhino and the Generative Components of Bentley. It is designed to take the parametric modeling capabilities of Revit to the next level by adding certain levels of associativity of data and geometry that is not available in the Revit functionalities e.g. driving parameters based on external inputs or analysis. One can map the required parameters and change its value dynamically based on input source. (Kensec, 2014)

Dynamo was used for a number of applications, including the connection between the Arduino board, a light sensor, and the information model for building. It was also used for various other applications as a general purpose interface for Revit e.g. creating/making Revit sheets and view layouts, it has also a potential use for fabrication of architectural components, making virtual automated shading devices, extracting solar radiation values and Changing Revit parametric geometry by manipulating a value slider in the Dynamo. (Kensec, 2014)

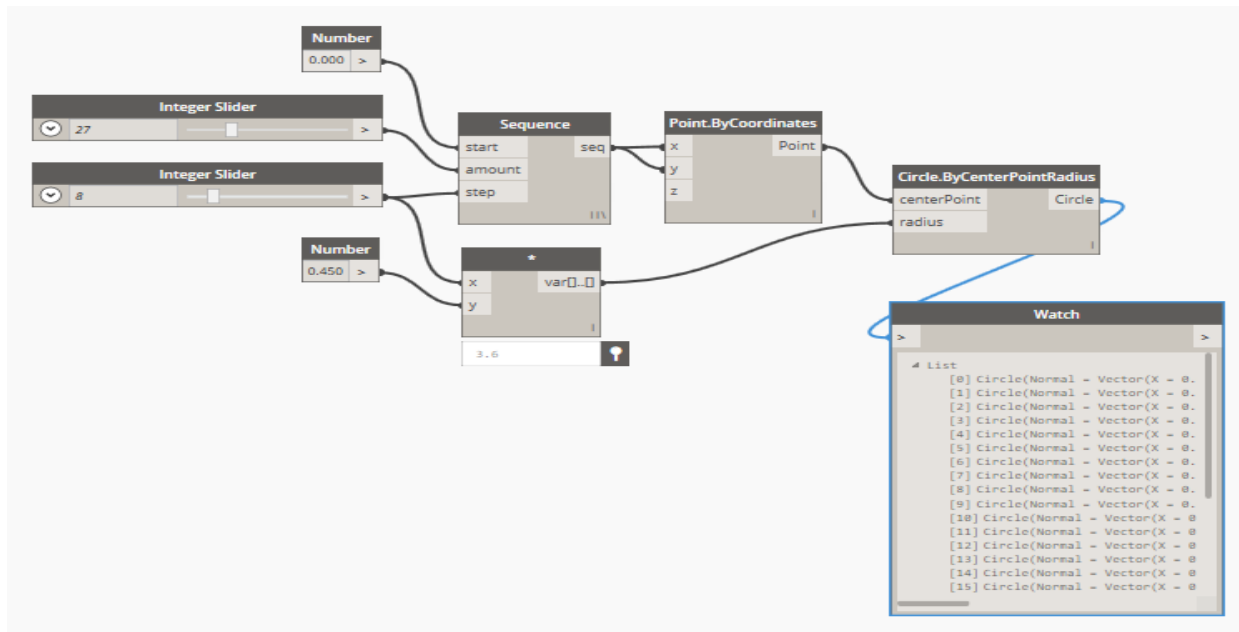


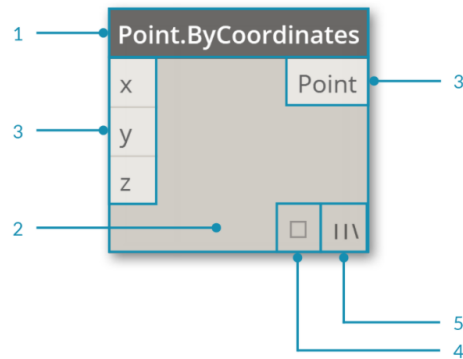
Figure 6 - Program Flow in Dynamo

### 2.8.1 THE ANATOMY OF DYNAMO

Dynamo is a visual programming language tool and the operations of data is executed by nodes and wires in the dynamo workspace. The nodes perform a function. The function or task which the node can execute can be very simple as adding two numbers or as complex as creating complex geometry. The language used for scripting the nodes is python. With some exceptions, majority of nodes are composed of the following five parts:

1. Name of the Node.
2. Main Body: Right clicking here presents options at the level of whole node.
3. Input and output ports: Wires are connected through these ports.
4. Data preview: Results executed from the node can be viewed.

5. Lacing Icon: Indicates lacing option specified for matching list.



*Figure 7 - Anatomy of the Nodes*

Connecting two nodes is simple as clicking on the output port of one node (a connecting wire will originate) and then clicking on the input port of the other node. Make sure to connect the right input with the node otherwise feeding the wrong input or data type will generate errors. The wires connecting the nodes transfer data like the electrical cables that transfer power.

## 2.9 PROBLEMS IN EXISTING CODE COMPLIANCE PROCESS

A number of research papers were studied to identify the problems in existing code compliance checking process and then confirmed by doing field survey whose results are as follows:

	Research Papers	A	B	C	D	E	F	G	H	I	J	K	L	Total
<b>Problems</b>														
Costly		•			•		•		•	•	•	•		7
Delays		•	•	•			•	•	•		•			7
Time consuming		•				•	•		•	•	•	•		7
Error Prone		•			•	•	•		•		•		•	7
Laborious		•			•		•		•				•	5
Inconsistencies in interpretation			•	•		•				•	•			5
Iteration		•				•	•						•	4
Ambiguous				•				•						2
Cumbersome		•					•							2
uncertainties						•					•			2
Unreliable						•				•				2
Inconsistent								•						1
Wrong Execution		•												1

Legend	
A	Cornelius Preidel and Andre Borrmann, 2015
B	Charles S. Han et al., 1997
C	David Greenwood et al., 2010
D	Johannes Dimyadi and Robert Amore, 2013
E	Jonathan Reinhardt and Malachy Mathews, 2017
F	Cornelius Preidel et al., 2017
G	Sagar Malsane et al., 2014
H	A. Fatima et al., 2015
I	Tala Kasim, 2015
J	Tang-Hung Nguyen Jin-Lee Kim, 2011
K	C. Eastman et al., 2009
L	Vito Getulia et al., 2017

Figure 8 – Problems from Literature Review

Problems	CDA
Costly	•
Delays	•
Time consuming	•
Error Prone	•
Laborious	•
Inconsistencies in interpretation	
Iteration	•
Ambiguous	•
Cumbersome	•
uncertainties	
Unreliable	
Inconsistent	•
Wrong Execution	

*Figure 9 – Problems from Survey of CDA*

The table shows the exact key words mentioned in literature as the problems in manual code compliance checking process and the number of times it is mentioned in different literature. In the table it is sorted from most occurring problem to least. Then confirmed by the CDA through surveys.

### 3. METHODOLOGY

#### 3.1 GENERAL

The methodology adopted to develop an automated system for the compliance checking of building structures.

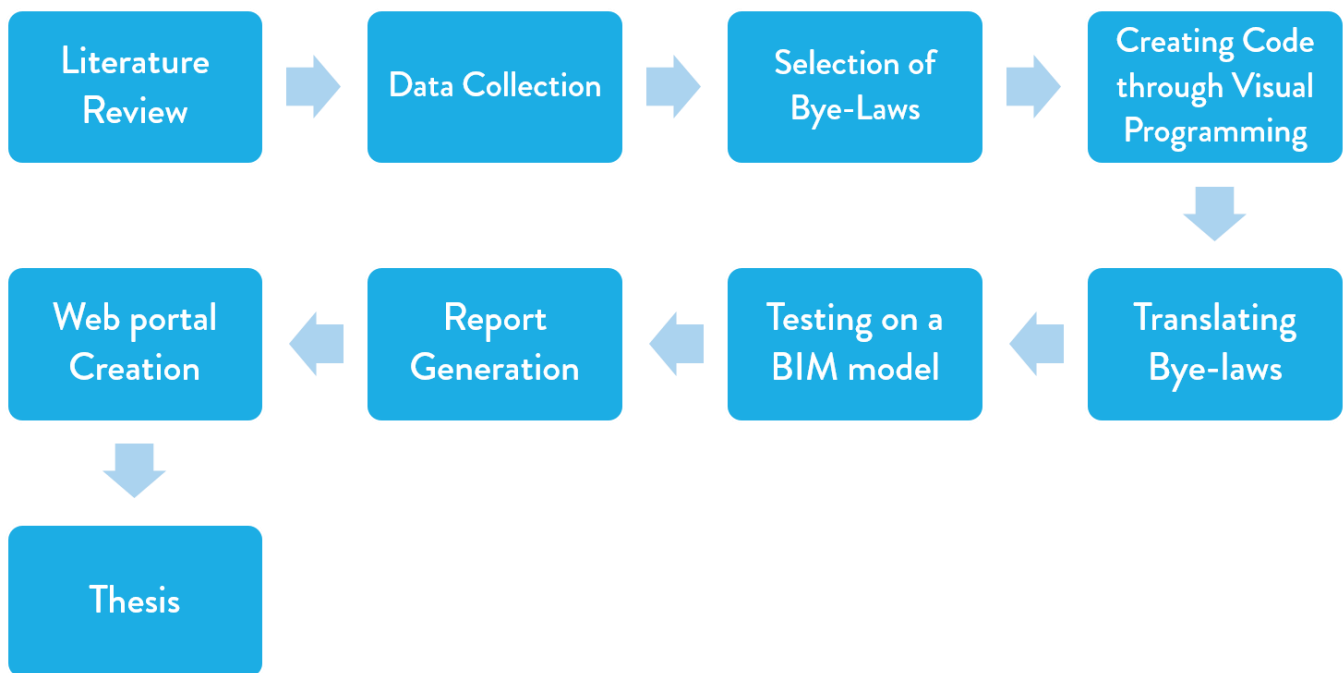


Figure 10 - Project Methodology and Workflow

### 3.2 AUTOMATION OF THE PROCESS

Data to be collected from Capital Development Authority about the manual code compliance checking process. Several officials were interviewed to have a clearer image of the process. After understanding the process of the manual code compliance checking, the selection of the bye-laws was done. The Bye-laws chosen were the Islamabad Residential Sectors Zoning (Building Control) Regulations (CDA, 1993).

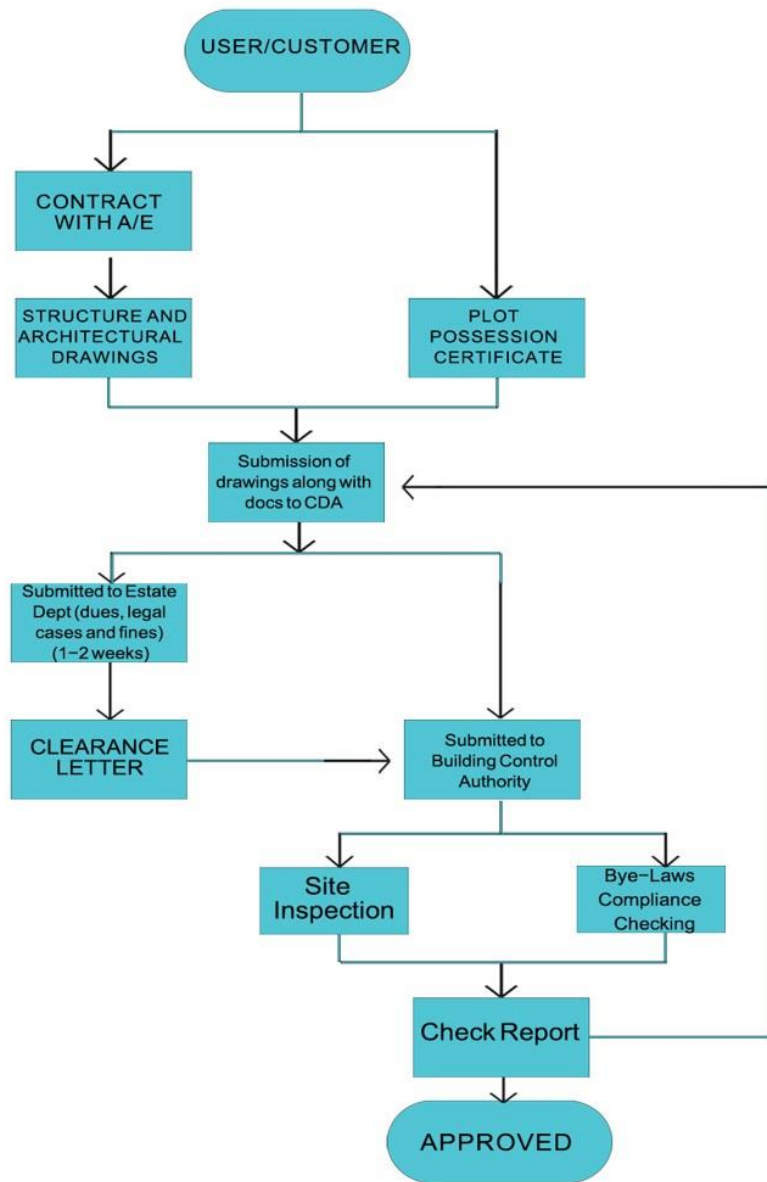


Figure 11 - Manual code compliance checking process



After the creation of an automated BIM code compliance process, open the BIM Model in Autodesk Revit and run the Dynamo framework. Assuming that the 3D Model is a complete model i.e it has defined names, areas, tags, categories, dimensions, property line and fixed boundaries etc., dynamo will extract data from the BIM model i.e its features, specifications and the dimensions.

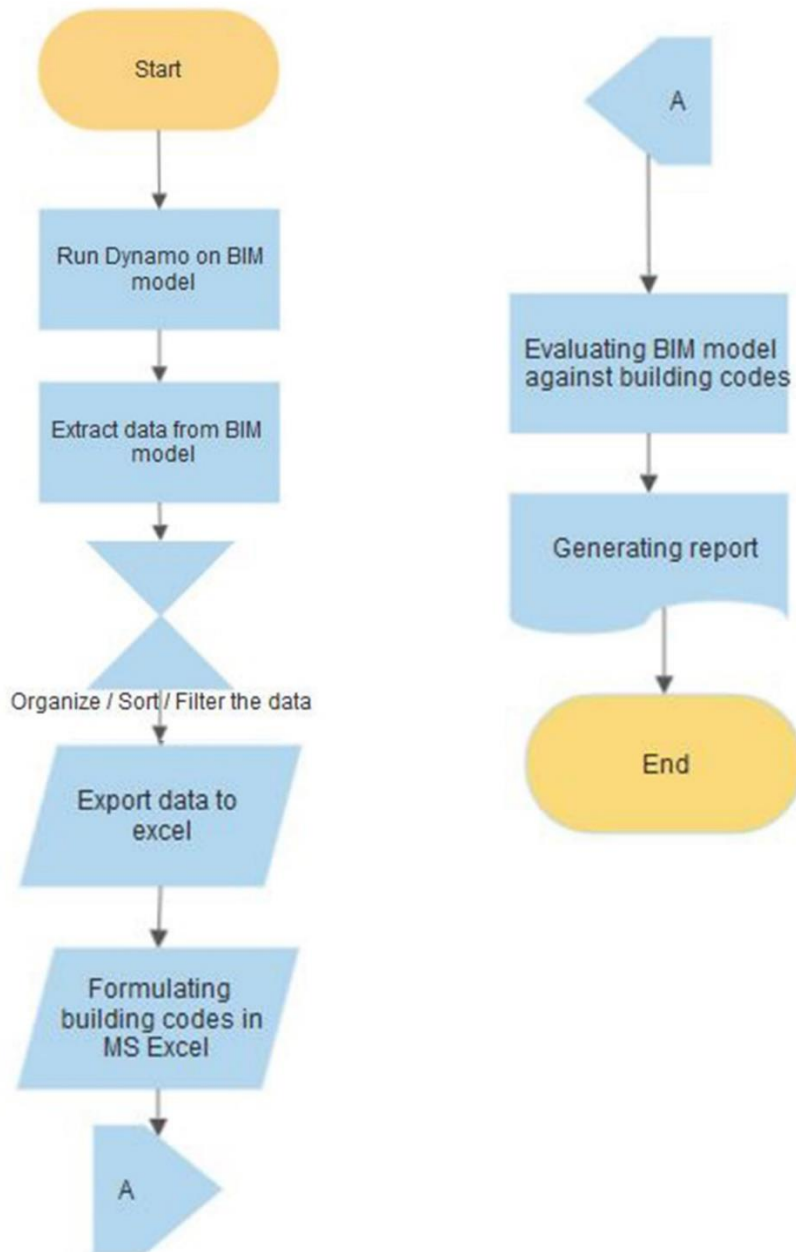


Figure 12 - Workflow of Creating code through Visual programming

A typical BIM model has a lot of mixed up data stored in it, but that jumbled up data is of no use in that form. So, the data extracted from the model is then organized, sorted and filter using nodes such as List, Transpose and Select etc. The sorted and organized data is exported to excel where the further process of compliance checking is done.

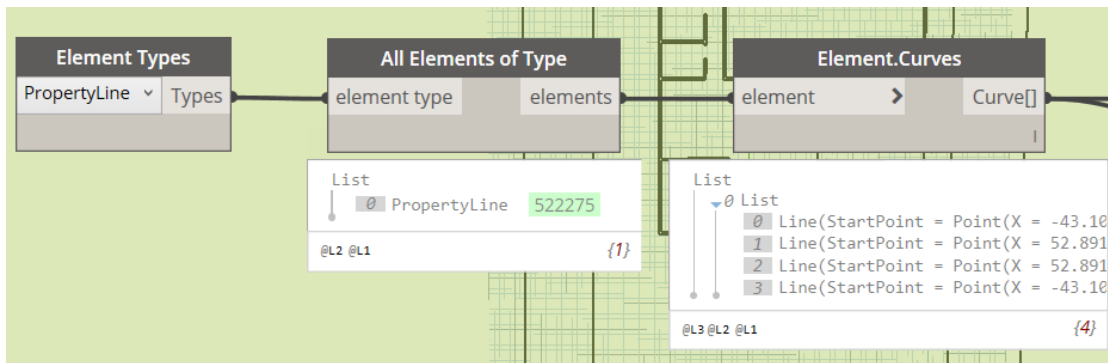


Figure 13 - Extracting Data from BIM Model

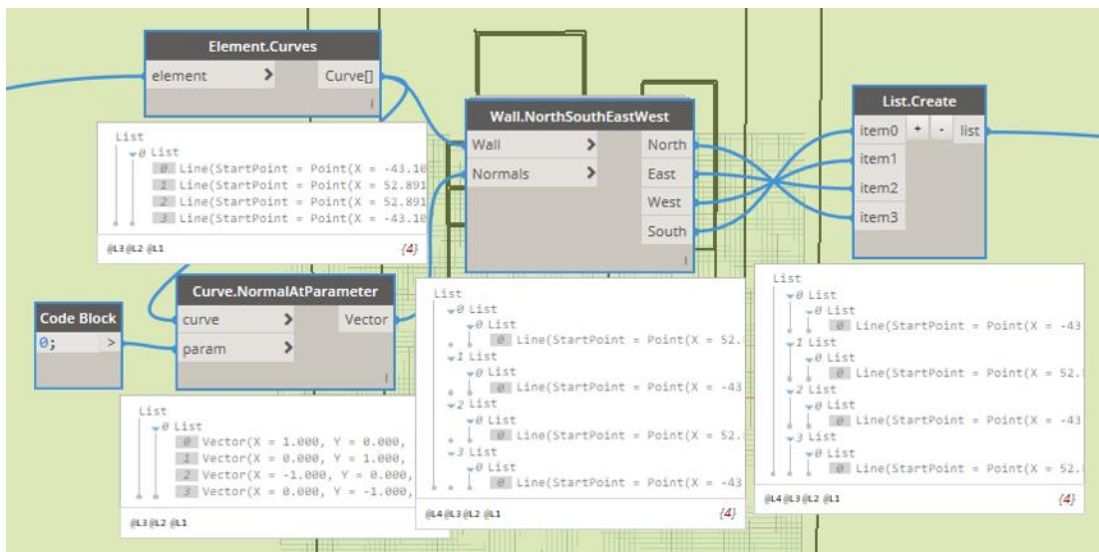


Figure 14 - Organizing and Filtering Data from BIM model

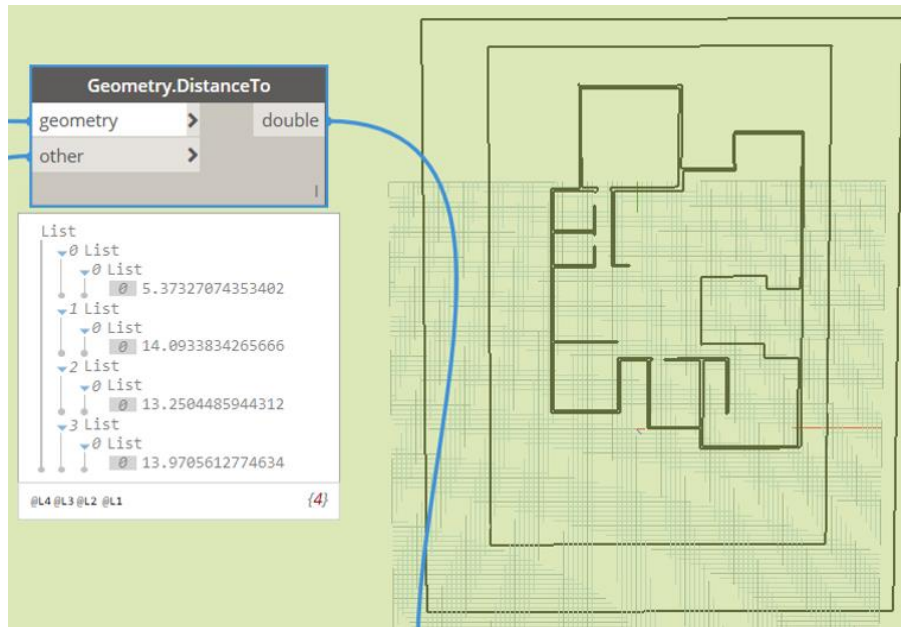


Figure 15 - Result after Calculations

For the process of compliance checking, formulae are made in MS excel and the Revit model specifications are checked against the CDA bylaws. Basically, the bylaws are converted into a form that is comparable with the extracted data. After the data is exported to the excel file, it is organized under the column of “Actual Values”. Another column is made under the title “Code Values” in which values from the Bylaws are added. These 2 columns are then compared using certain self-made formulas. The Revit model specifications are checked against the CDA bylaws. Which will tell us that what features comply with the specifications and which do not.

Zoning Bulk and Height Regulations														
Data	Plot Type	Type of Development	Plot Size		Buildings					Minimum Setbacks				
			Max Area in sq.yd	Max Frontage	Max F.A.R	Max Ground Builtup Area (%)	Max No. of Storeys	Max Height	Max Area of Stair	Front	Side-1	Side-2	Rear	
Max Allowed	B1	B	625	49	1.05	60	2	30	200	10	0	0	10	
From BIM			600	32	0.83	29	2	32.24	65	14	14.1	13.2	5.4	
Result			Accepted	Accepted	Accepted	Accepted	Accepted	Rejected	Accepted	Accepted	Accepted	Accepted	Rejected	

Figure 16 - Final Result in Spreadsheet program



### 3.5 SERVICE DELIVERY MANAGEMENT SYSTEM

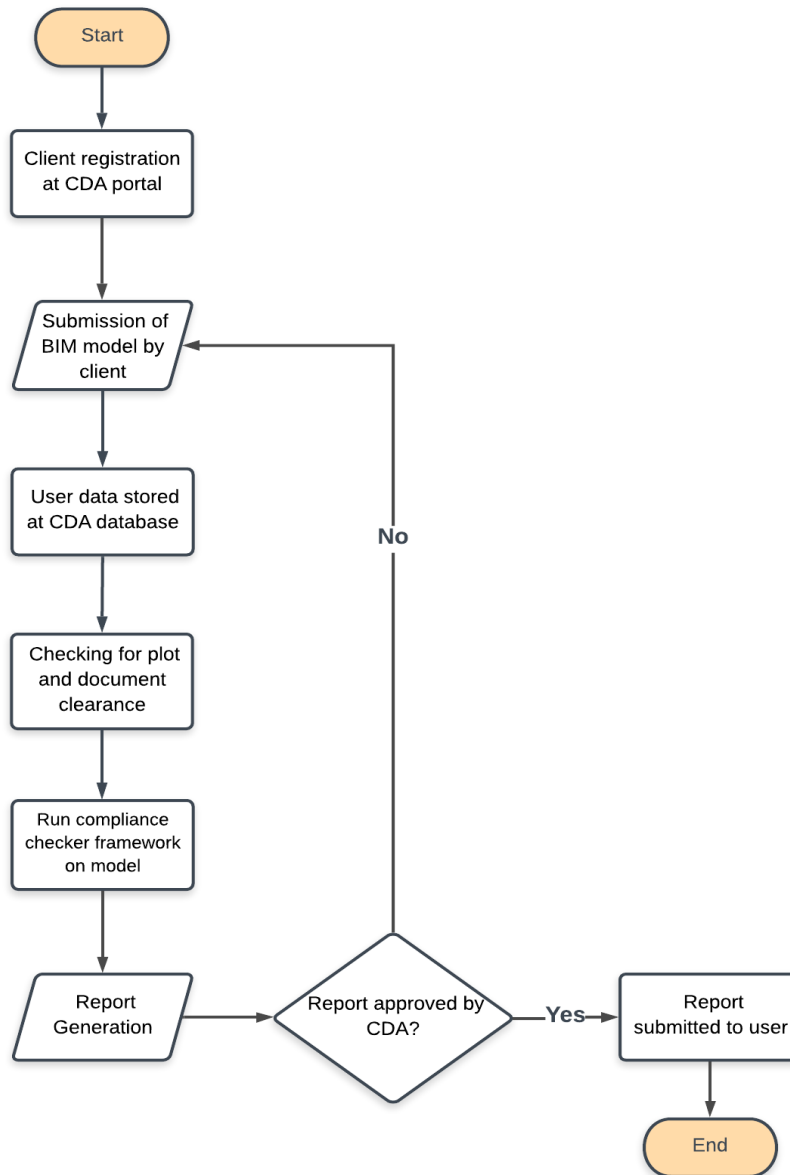


Figure 18 - Workflow of Service Delivery Management System

First of all the user has to register himself at the CDA portal by creating an account. This will personalize the access only to the specified user and ensure the privacy. After that the user will submit the BIM model on the portal. The data from the sign up page will be stored in the CDA database for further use.

The CDA authorities will check for the specifications of the plot or model and after the concerned approval the documents will be cleared for further processing. If the model is not accepted or documents are not cleared then the model will be handed back to the client.

After the approval and clearance of the model, CDA will run compliance checker on the model to check for that the model is according to the required specifications or not.

After the compliance checking, whatever the results are whether the model is compliant or not a report will be generated which would include all the details of the specifications and would include the features which are compliant and the ones which are not. The report copy will be then submitted to the client so as he can look out for the modifications.

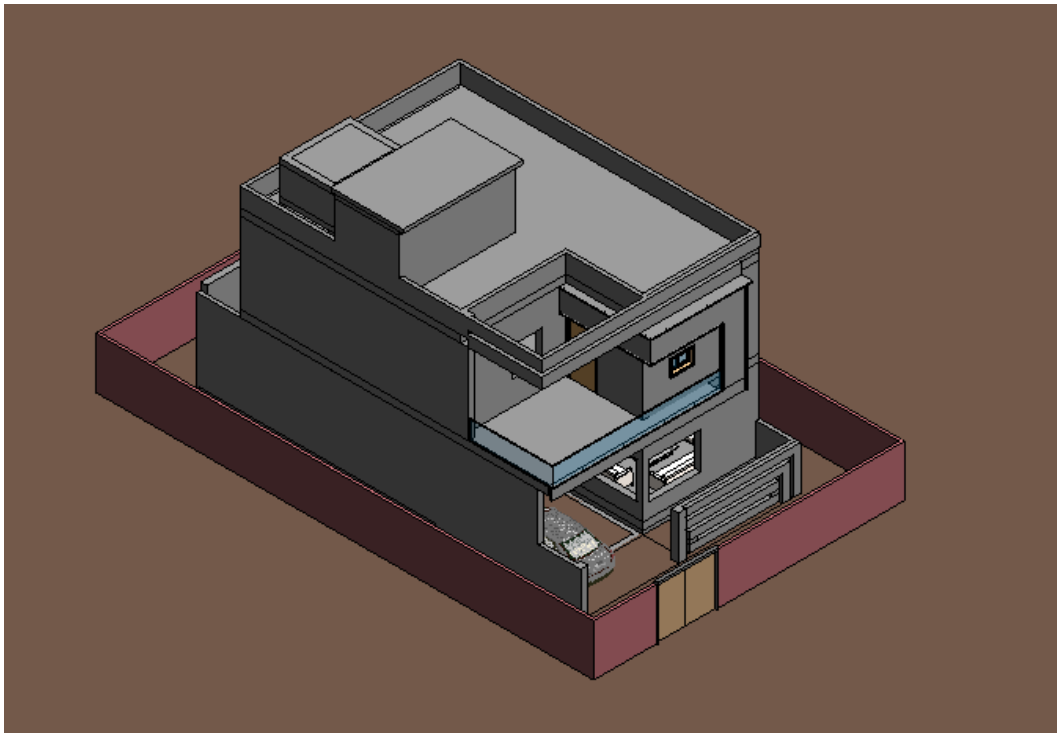
## 4. RESULTS

### 4.1 BACKGROUND

To identify the problems present in existing code compliance checking process, literature was studied and a field survey was done. For the purpose of creating Automated Code Compliance checking process two BIM models of residential buildings were created using Autodesk Revit and used for testing of automated code compliance process.

### 4.3 CREATING CODE COMPLIANCE CHECKING PROCESS

A complete BIM model was created for testing the code compliance checking process and the automated code compliance checking was successfully created and tested the snaps of whose results are shown:



*Figure 19 - BIM model of Residential Building*

Compacted form of all the rules of CDA Byelaws made and copied into one file for easy to use one click operation

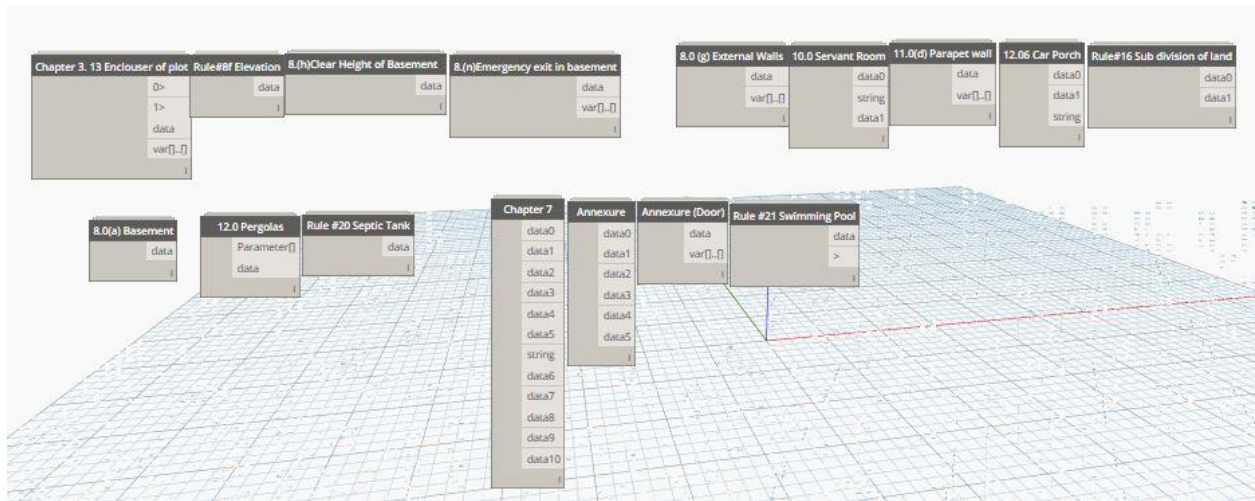


Figure 20 - Codes developed through Visual programming

The final result of compliance checking process in Spreadsheet program. Macros were developed for easy printing the whole report.

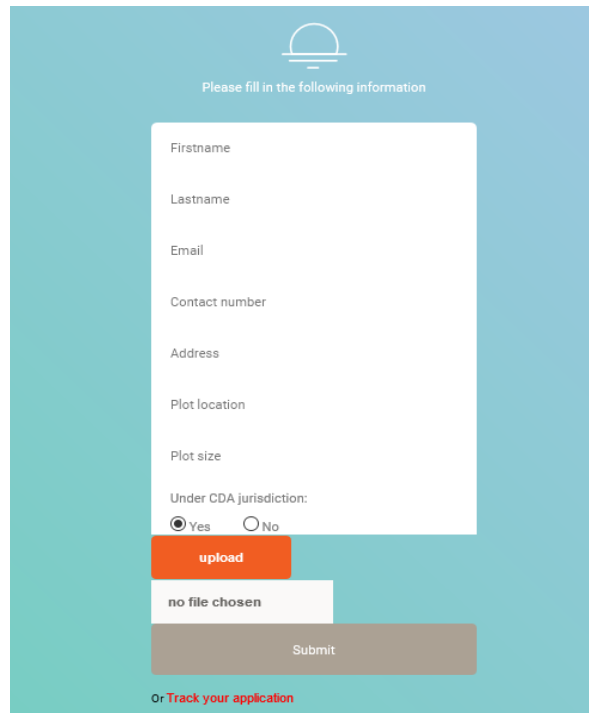
	A	B	C	D	E	F	G	H	I	J	K
1	<b>Name</b>	<b>Area from Model (ft^2)</b>	<b>Height from Model (ft)</b>	<b>Width from Model (ft)</b>	<b>Element ID</b>	<b>Minimum Area (ft^2)</b>	<b>Check</b>	<b>Minimum Height (ft)</b>	<b>Check</b>	<b>Minimum Width (ft)</b>	<b>Check</b>
2	Drawing Room	266	9	16.5	374642	100	Accepted	9	Accepted	8.5	Accepted
3	Bedroom	145	9	12.04166667	374648	100	Accepted	9	Accepted	8.5	Accepted
4	Bedroom-2	172.5228679	9	12.94110746	375165	100	Accepted	9	Accepted	8.5	Accepted
5	Bedroom-3	136.75	9	12.5	375175	100	Accepted	9	Accepted	8.5	Accepted
6	Room	139	9	8.55	375178	100	Accepted	9	Accepted	8.5	Accepted
7	Bedroom-4	177.5833333	9	14.91666667	375181	100	Accepted	9	Accepted	8.5	Accepted
8						100		9		8.5	
9						100		9		8.5	
10						100		9		8.5	
11						100		9		8.5	
12						100		9		8.5	
13						100		9		8.5	
14						100		9		8.5	
15											
16	<b>Name</b>	<b>Area from Model (ft^2)</b>	<b>Height from Model (ft)</b>	<b>Width from Model (ft)</b>	<b>Element ID</b>	<b>Minimum Area (ft^2)</b>	<b>Check</b>	<b>Minimum Height (ft)</b>	<b>Check</b>	<b>Minimum Width (ft)</b>	<b>Check</b>
17	Bath 1	40	8	6.5	374651	24	Accepted	7	Accepted	3	Accepted
18	Bath-2	48	8	7	375169	24	Accepted	7	Accepted	3	Accepted
19	Bath-3	54	8	7.5	375172	24	Accepted	7	Accepted	3	Accepted
20						24		7		3	
21						24		7		3	

Figure 21 - Report of Complete BYE-LAWS



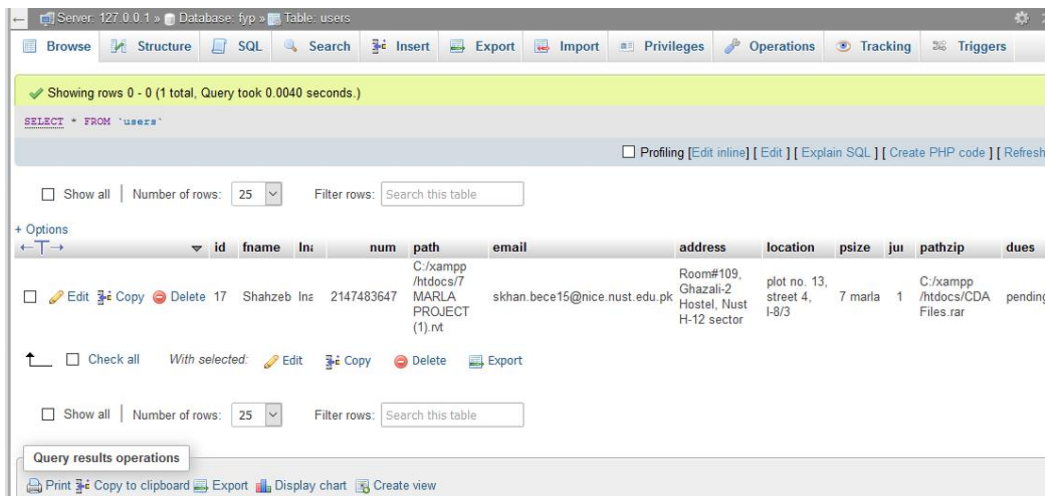
## 4.4 SERVICE DELIVERY MANAGEMENT SYSTEM

For the purpose of efficient and time saving service delivery management system XAMPP database management and PHP programming language were used. Using this user can sign up easily on CDA website and submit his BIM model for compliance checking and receive the results on the same website which are shown below:



The image shows a user registration form on a teal background. At the top, there is a sun icon and the text "Please fill in the following information". The form fields are: Firstname, Lastname, Email, Contact number, Address, Plot location, Plot size, and Under CDA jurisdiction: (with radio buttons for Yes and No). Below the fields are three buttons: an orange "upload" button, a white "no file chosen" button, and a grey "Submit" button. At the bottom, there is a link that says "Or Track your application".

Figure 22 - User Portal in Service delivery management system



The image is a screenshot of a web application interface showing a table of user data. The table has columns for id, fname, lname, num, path, email, address, location, psize, juu, pathzip, and dues. The data row shows a user with id 17, fname Shahzeb, lname Inz, num 2147483647, path C:/xampp/htdocs/7/MARLA PROJECT (1).rt, email skhan.bece15@nice.nust.edu.pk, address Room#109, Ghazali-2 Hostel, Nust H-12 sector, location plot no. 13, street 4, I-8/3, psize 7 marla, juu 1, pathzip C:/xampp/htdocs/CDA Files.rar, and dues pending. The interface includes a toolbar with options like Browse, Structure, SQL, Search, Insert, Export, Import, Privileges, Operations, Tracking, and Triggers. A status bar at the top indicates "Showing rows 0 - 0 (1 total, Query took 0.0040 seconds)".

id	fname	lname	num	path	email	address	location	psize	juu	pathzip	dues
17	Shahzeb	Inz	2147483647	C:/xampp/htdocs/7/MARLA PROJECT (1).rt	skhan.bece15@nice.nust.edu.pk	Room#109, Ghazali-2 Hostel, Nust H-12 sector	plot no. 13, street 4, I-8/3	7 marla	1	C:/xampp/htdocs/CDA Files.rar	pending

Figure 23 - CDA portal of Service Delivery Management System

## **5. CONCLUSION AND RECOMMENDATION**

### **5.1 CONCLUSION**

After the Automated Building code compliance checking process was successfully created, it was tested on several 3D BIM Models and from it we can conclude the following:

1. Since delays and errors are greatly reduced and time is saved in the process, this process should be used in the design process of the building to check for building compliance in less time.
2. Days of work can be done in minutes or hours. The quicker the work will be done, the more work can be done in a short time.
3. No such expertise of BIM required by either the user/customer or the Local Development Authority to operate the process.
4. Less costly as the user/customer does not need to hire agents or go to the Local Authorities himself to submit all the required documents multiple times. This can be done online through the portal.

### **5.2 RECOMMENDATIONS**

Some of the Scope limitations of the project which is also research opportunity are as follows:

#### **5.1.1 BYE-LAWS**

The Bye-laws selected, but not confined to, for this project was the Islamabad Residential Sectors Zoning (Building Control) Regulations (CDA, 1993) used by Capital Development Authority in the region of Islamabad.

#### **5.1.2 TYPE OF CONSTRUCTION**

The compliant checker only checks for residential houses as of yet but similar methodology can be applied for different construction types.

### **5.1.3 DESIGN INTENT**

The scope of this project is currently only for design intent i.e for approval of pre-construction drawings. Similar methodology with the help of modern tools like Lasers, RFID etc can be used to extend this project to approval of post-construction drawings to check if the initial drawing was actually implemented or not.

## REFERENCES

- Abdullah, H., Haroon, Mamoon. (2013). *BIM BASED ANALYSIS OF A MULTI-STORY BUILDING AND ESTIMATION OF SERVICE LIFE OF BUILDING COMPONENTS*. Retrieved from
- Arkin, & gregory. (2007). The history of Revit - the future of Design.
- Azhar, S. (2011a). Building Information Modeling (BIM): Trends, Benefits, Risks and Challenges for the AEC Industry.
- Azhar, S. (2011b). Building information modeling (BIM): Trends, benefits, risks, and challenges for the AEC industry. *Leadership and management in engineering*, 11(3), 241-252.
- Bergin, M. R. A. M., & Yan, A. M. W. (2015). BIM based Parametric Building Energy Performance Multi-Objective Optimization.
- Ciribini, A., Ventura, S. M., & Paneroni, M. (2016). Implementation of an interoperable process to optimise design and construction phases of a residential building: A BIM Pilot Project. *Automation in construction*, 71, 62-73.
- Dimiyadi, J., & Amor, R. (2013). Automated Building Code Compliance Checking - Where is it at?
- DynamoPrimer. (2016). The Anatomy of Dynamo.
- Eastman, C., Lee, J.-m., Jeong, Y.-s., & Lee, J.-k. (2009). Automatic rule-based checking of building designs. *Automation in construction*, 18(8), 1011-1033.
- Eastman, C. M. (2011). *BIM handbook : a guide to building information modeling for owners, managers, designers, engineers and contractors* (2. ed.). Hoboken, NJ: Wiley.
- Ghaffarianhoseini, A., Tookey, J., Ghaffarianhoseini, A., Naismith, N., Azhar, S., Efimova, O., & Raahemifar, K. (2017). Building Information Modelling (BIM) uptake: Clear benefits, understanding its implementation, risks and challenges. *Renewable and Sustainable Energy Reviews*, 75, 1046-1053. Retrieved from <http://www.sciencedirect.com/science/article/pii/S1364032116308413>. doi:<https://doi.org/10.1016/j.rser.2016.11.083>
- Hardin, B., & McCool, D. (2015). *BIM and construction management: proven tools, methods, and workflows*: John Wiley & Sons.
- Jung, Y., & Joo, M. (2011). Building information modelling (BIM) framework for practical implementation. *Automation in construction*, 20(2), 126-133. Retrieved from <http://www.sciencedirect.com/science/article/pii/S0926580510001391>. doi:<https://doi.org/10.1016/j.autcon.2010.09.010>

- Kensec, K. M. (2014). Integration of Environmental sensors with BIM: case studies using Arduino, Dynamo and the Revit API.
- Leonas, U., Arūnas, P., Jovita, S., Mantas, V., Oksana, Č., & Robertas, K. (2018). Challenges of BIM technology application in project planning. *Engineering Management in Production and Services*, 10(2), 15-28. Retrieved from <https://content.sciendo.com/view/journals/emj/10/2/article-p15.xml>. doi:<https://doi.org/10.2478/emj-2018-0008>
- Motamedi, A., Iordanova, I., & Forgues, D. (2018). FM-BIM preparation method and quality assessment measures.
- Nguyen, T.-H., & Kim, J.-L. (2011). *Building code compliance checking using BIM technology*. Paper presented at the Proceedings of the 2011 Winter Simulation Conference (WSC).
- Reinhardt, J., & Mathews, M. (2017). The Automation of BIM for Compliance Checking: a Visual Programming Approach.
- Solihin, W., & Eastman, C. (2015). Classification of rules for automated BIM rule checking development. *Automation in Construction*, 53, 69-82. Retrieved from <http://www.sciencedirect.com/science/article/pii/S0926580515000370>. doi:<https://doi.org/10.1016/j.autcon.2015.03.003>
- Ustinovičius, L., Puzinas, A., Starynina, J., Vaišnoras, M., Černiavskaja, O., & Kontrimovičius, R. (2018). Challenges of BIM technology application in project planning. *Engineering Management in Production and Services*, 10(2), 15-28.
- Weng, S.-J., Cheng, B.-C., Kwong, S. T., Wang, L.-M., & Chang, C.-Y. (2011). *Simulation optimization for emergency department resources allocation*. Paper presented at the Proceedings of the Winter Simulation Conference.
- Tan, X., Hammad, A., and Fazio, P. (2010) 'Automated Code Compliance Checking for Building Envelope Design', *Journal of Computing in Civil Engineering*, 24 (2), pp. 203-211.
- Malsane, Sagar & Matthews, Jane. (2010). Automated compliance checking using building information models.